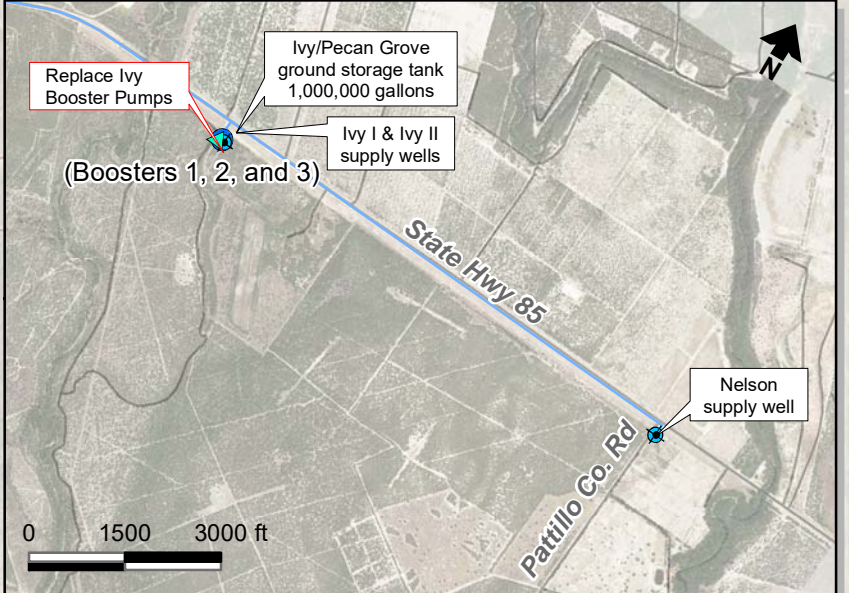
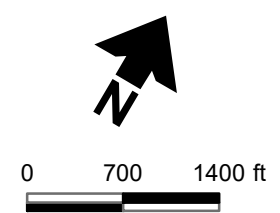
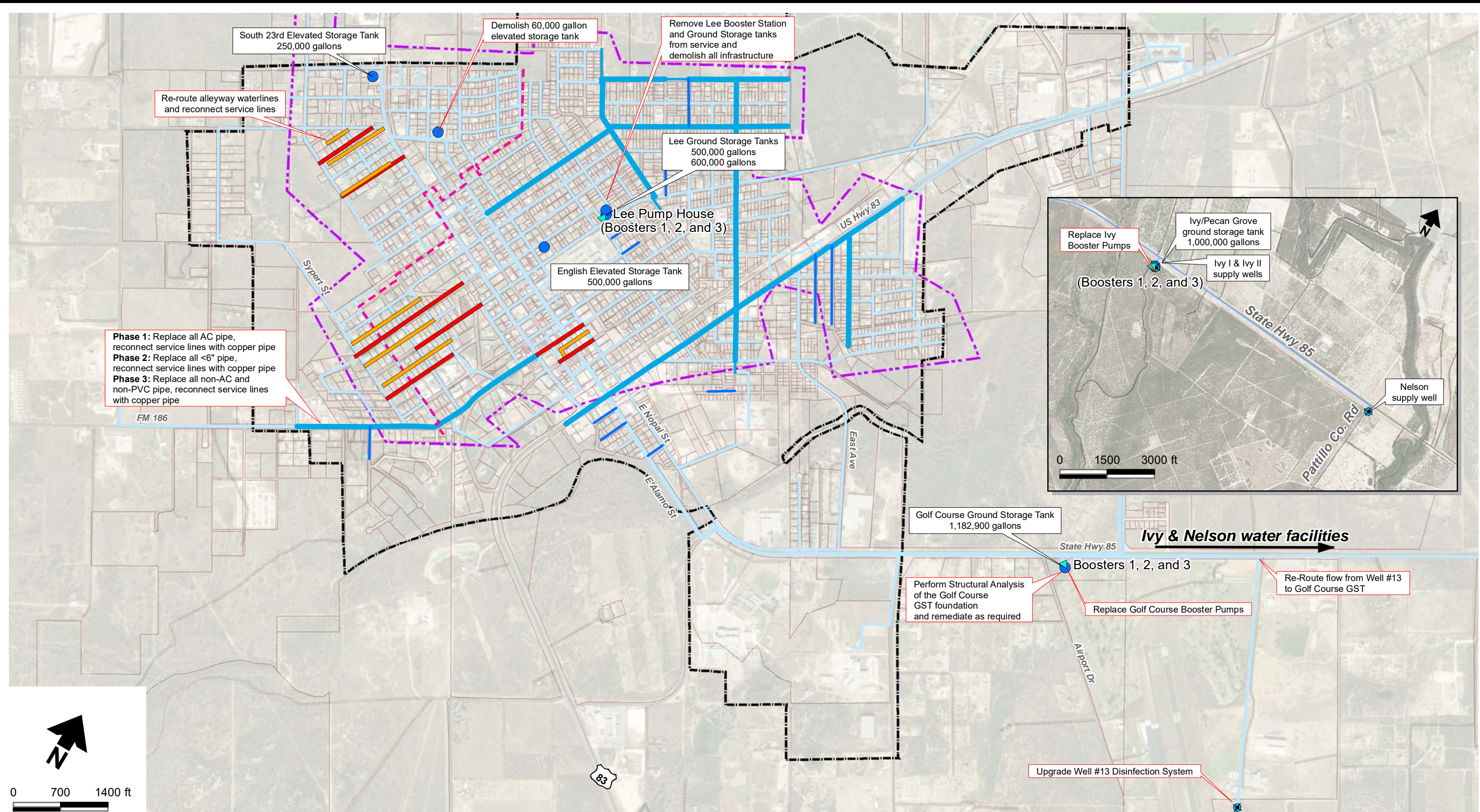


S:\PROJECTS\B21.1179\_CARRIZO\_SPRINGS\_WATER\_SYSTEM\GIS\MXD\FIG07\_PROPOSED\_CONSTRUCTION.MXD



**Explanation**

- Storage tank
- ▲ Water booster station
- ◆ Water supply well
- PVC < 6 inches
- AC ≥ 6 inches
- AC < 6 inches
- Waterline (unknown material)
- Pressure tier boundary
- Road
- Parcel
- Project area
- Corporate boundary
- New 6-inch roadway piping and required service lines
- Old Alleyway Piping (to be abandoned)

Source: Vivid, Maxar 1/19/2017

Figure 7